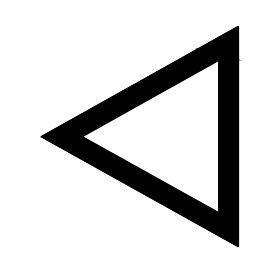
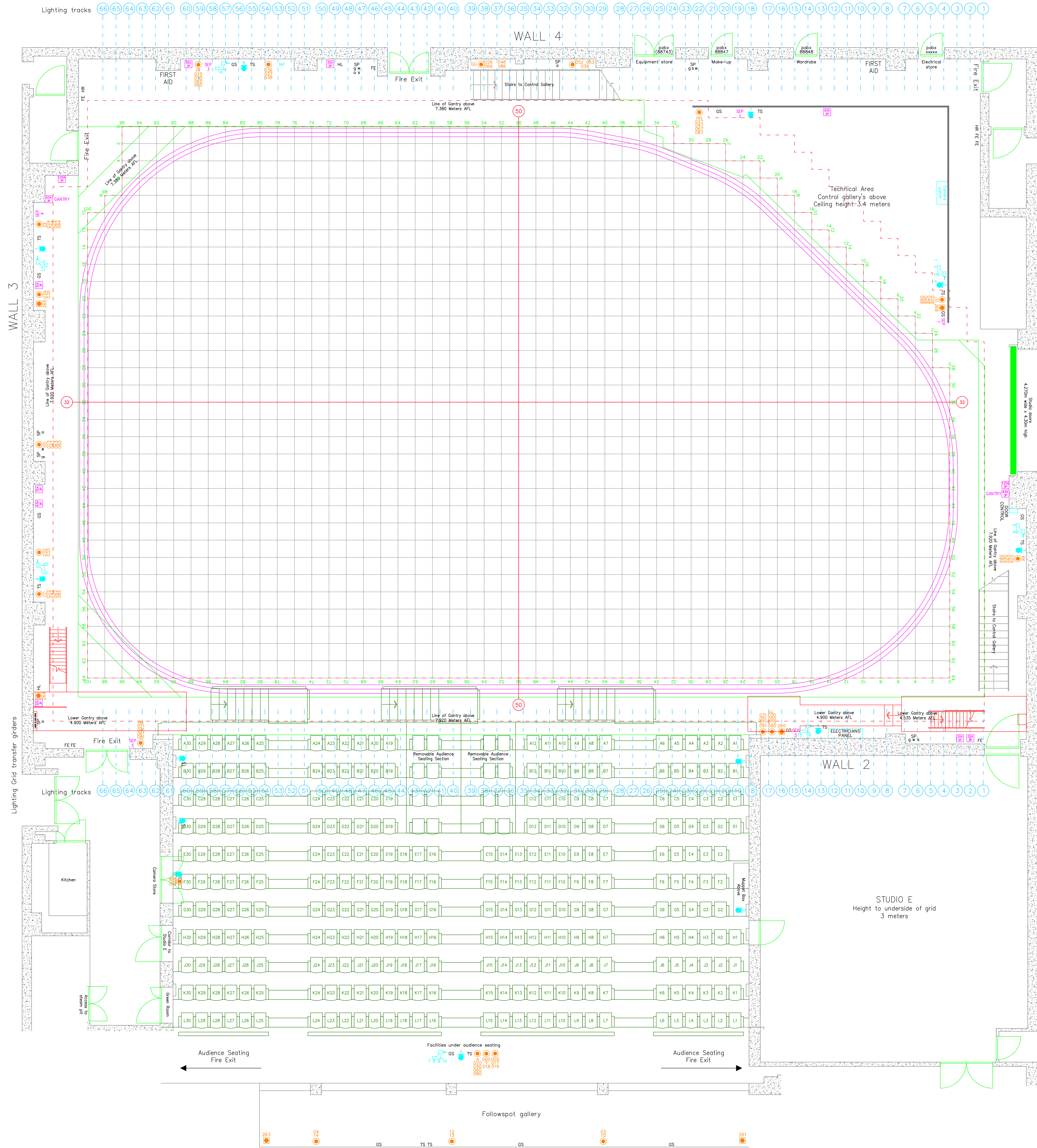
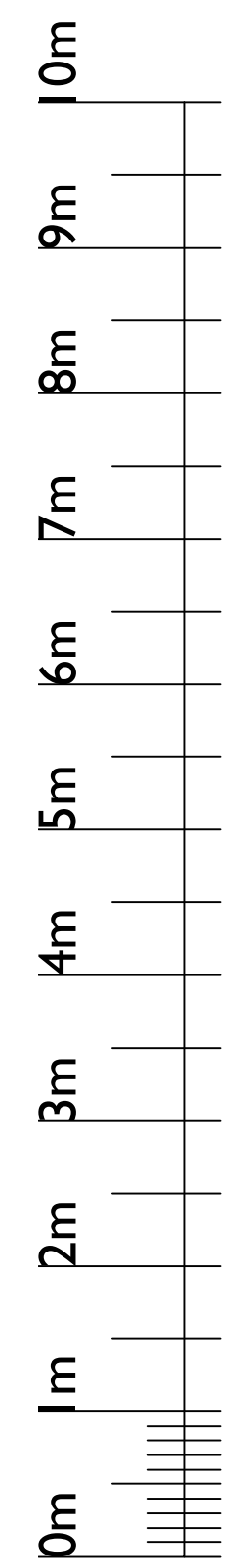


Studio Plan Metric Scale 1:50@A0  
**Elstree Studio D**

BBC Elstree, Clarendon Road, Borehamwood,  
 Herts, WD6 1JF Tel: +44 (0) 203 327 6900

STUDIO SERVICING ROAD



**KEY TO SYMBOLS:**

HL	HOUSE LIGHTS	FE	FIRE EXTINGUISHER	HR	FIRE HOSE REEL	SP	SERVICE POINT: g = Gas; w = Water; s = Sink; a = Compressed Air	TS	TECHNICAL POWER SOCKET	GS	GENERAL SERVICE POWER SOCKET
—	STUDIO FLOOR SETTING GRID MARKINGS (600mm Sq)	—	STUDIO FLOOR SETTING GRID CENTRE LINE (Walls 1-3 Line #52 Walls 2-4 Line #50)	—	STUDIO FLOOR SETTING GRID OUTLINE	—	STUDIO CYCLORAMA TRACKS	—	32 AMP SINGLE PHASE 230V SUPPLY	—	32 AMP THREE PHASE 400V SUPPLY
—	63 AMP SINGLE PHASE 230V SUPPLY	—	63 AMP THREE PHASE 400V SUPPLY	—	125 AMP THREE PHASE 400V SUPPLY	—	SCENERY EARTH POINT	—	5KW LIGHTING SOCKET OUTLET	—	10KW LIGHTING SOCKET OUTLET
—	LIGHTING GRID TRANSFER GRIDDERS	—	LIGHTING GRID TRACK & TRACK NUMBER	—	LIGHTING GRID TRACK LINES	—	SOUND & VISION WALLBOX	—	CAMERA CABLE CONNECTION	—	NETWORK POINT

**DESIGN NOTES:**

**NOTES:**

Height of Cyclorama Rails	7.520m
Height of Gantry Floor	7.380m (Wall 4) & 7.920m
Height to Lighting Grid	10.020m
Studio Floor Grid Markings	600mm Sq
Audience Seating Capacity	303 or 319
Over Pieces & Gantry	Lower Gantry (Wall 2 only)
Studio Fire Lane	1200mm

**DRAWING DISTRIBUTION:**

PRODUCTION \_\_\_\_\_

COSTING NO. \_\_\_\_\_

DESIGNER \_\_\_\_\_

DIRECTOR \_\_\_\_\_

DRAWN BY \_\_\_\_\_

ZERO DATE \_\_\_\_\_

PRODUCTION DATE \_\_\_\_\_

**BBC Studios & Post Production**

BBC Studios & Post Production strives, with its best endeavour, to ensure that the information contained within these plans is accurate. However, it must be understood that if there are any specific requirements, critical measurements, or any doubt, as to the exact conditions on site. It is strongly recommended that a site survey is conducted, prior to any works being undertaken.

Taking this simple precaution can and does save a lot of embarrassment.

Please contact BBC Studios & Post Production on +44 (0)203 327 6900 or your projects Studio Resource Manager for further assistance.