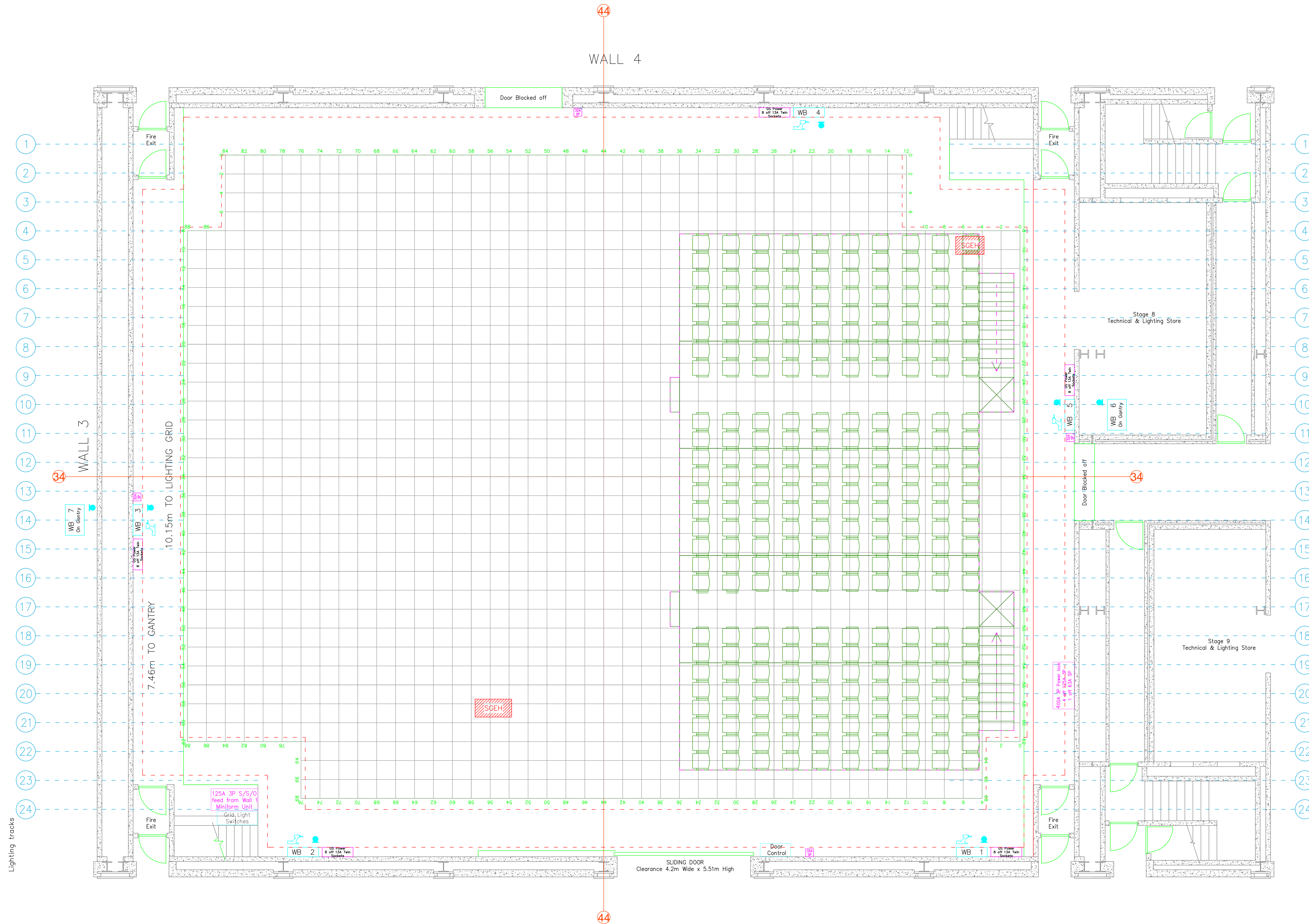
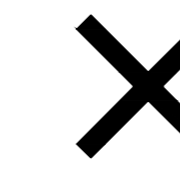
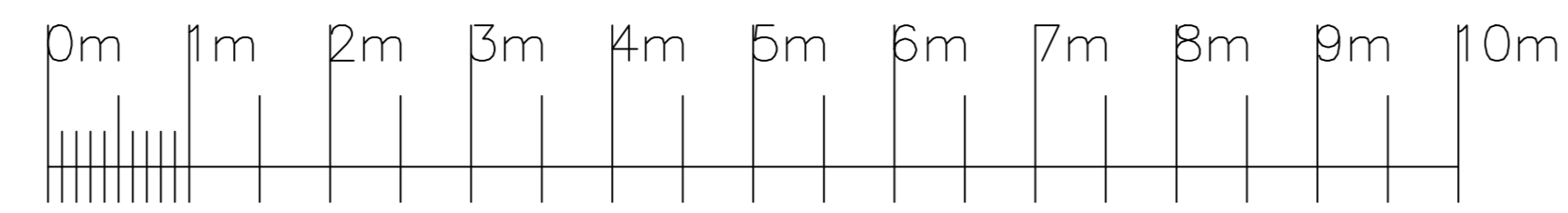


Studio Plan Metric Scale 1:50@A0
Elstree Stage 8

Elstree Studios, Shenley Road, Borehamwood, Herts, WD6 1JG Tel: +44 (0) 208 953 1600



KEY TO SYMBOLS:	NOTES:
— STUDIO FLOOR SETTING GRID MARKINGS (600mm Sq)	Studio Fire Lane
— STUDIO FLOOR SETTING GRID OUTLINE	Audience Rostra Outline
— STUDIO FLOOR SETTING GRID CENTRE LINE (Walls 1-3 Line #54 Walls 2-4 Line #44)	Height to Lighting Grid 10.15m
■ 32 AMP SINGLE PHASE 230V SUPPLY	Gantry Line
— LIGHTING GRID ORDERS	Lower Gantry Walkway Line
⑩ LIGHTING GRID TRACK & TRACK NUMBER	Height to Gantry Wall #1 7.46m & 4.40m
— LIGHTING GRID TRACK LINES 500kg Per grid track run section at any one time	Height to Gantry Wall #3 7.46m
■ SOUND & VISION WALLBOX	Lighting Dimmer & Distribution Racks
— CAMERA CABLE CONNECTION	48 ways of 5kW Dimmers
■ SCHE	48 ways of 2.5kW Dimmers
	72 ways of 2.5kW Non-Dimmable

DESIGN NOTES:

PRODUCTION _____

COSTING NO. _____

DESIGNER _____

DIRECTOR _____

DRAWN BY _____

ZERO DATE _____

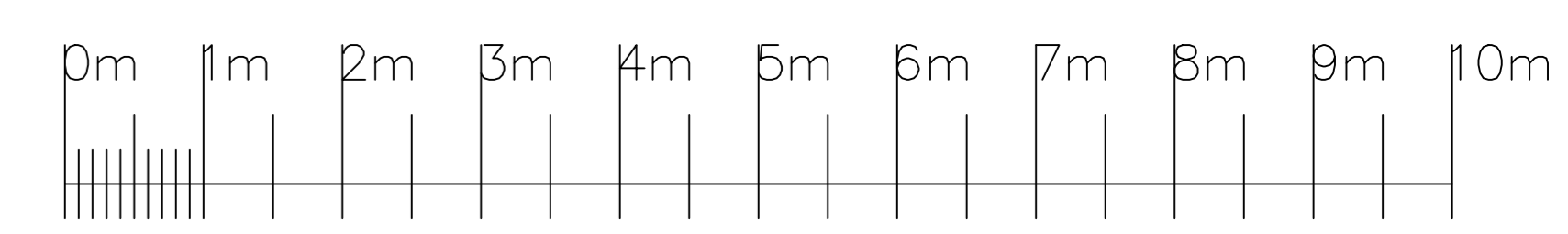
PRODUCTION DATE _____



BBC Studioworks strives, with its best endeavour, to ensure that the information contained within these plans is accurate. However, it must be understood that if there are any specific requirements, critical measurements, or any doubt, as to the exact conditions on site, it is strongly recommended that a site survey is conducted, prior to any works being undertaken. Taking this simple precaution can and does save a lot of embarrassment.

Please contact BBC Studioworks on +44 (0)203 327 6900 or your projects Studio Resource Manager for further assistance.

© BBC Studioworks Ltd 2016
 Issued December 2014; All previous versions superceded;
 Errors & Omissions Excepted (E&O)
 Updates:
 02/07/2013 RMT
 #10 22/12/2014 MLF #11 06/05/2016 John Loughman



WALL 1 CONTROL ROOMS ABOVE

WALL 2
 STUDIO SERVICING ROAD

