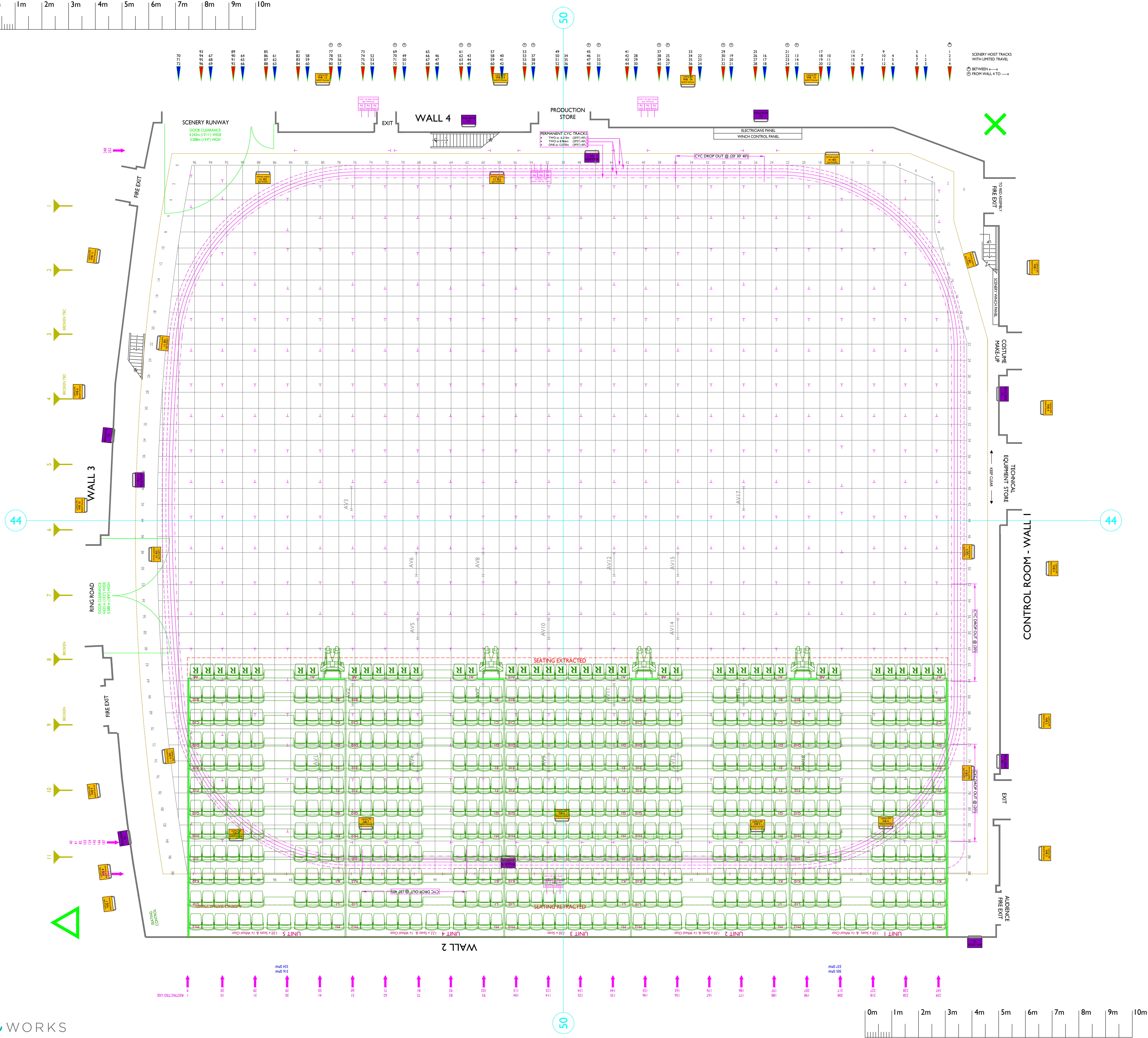


# Studio TCI

BBC Studioworks, Television Centre, Wood Lane, London W12 7RJ  
Tel: +44 (0) 203 327 6900



Key to Symbols:		Notes:
HL	House Lights	-MAX HEIGHT OF SCENERY HOOKS IS 12.00M
FE	Fire Extinguisher	-MAX HEIGHT OF LIGHTING BARS IS 12.50M
FL	Fire Lane	-FLOOR TO UNDERSIDE OF GRID 13.4M (44')
SP	Service Point	-STUDIO FLOOR GRID MARKINGS - 600mm SQ
Castella Beams	Main Roof Trusses	
Scenic Hoists - BLUE Hook	114kg SWL	
Scenic Hoists - RED Hook	180kg SWL	
Scenic Setting Floor Grid Markings	100mm Sq	
Studio Floor Centre Markings	10mm - 1.2m Spaced Walls 2.4m Spaced	
Studio Gantry Outline		
Audience Seating Outline		
Audience Seating		
Audience Seating Numbers	500 (Seated + 4 Wheelchairs)	
Lighting Hoist Outline SWL 100kg		
Lighting Hoist Line SWL 100 kg		
Wall Box GS Power	84mm DIA 2.2 500V 1-Phase 1.48kW 1-Phase 2.2 2.0ANE cables	Lighting Hoist Control Panel
32A SP-NE		Lighting Wall Box
62A SP-NE		Scenic Hoist Control Panel
		Technical Wall Box

### PRODUCTION DESIGN NOTES:

PRODUCTION
COSTING NO.
DESIGNER
DIRECTOR
DRAWN BY
ZERO DATE
PRODUCTION DATE



BBC Studioworks strives, with its best endeavour, to ensure that the information contained within these plans is accurate. However, it must be understood that if there are any specific requirements, critical measurements, or any doubt, as to the exact conditions on site. It is strongly recommended that a site survey is conducted, prior to any works being undertaken. Taking this simple precaution can and does save a lot of embarrassment. Please contact BBC Studioworks on +44 (0)203 327 6900 or your projects Studio Resource Manager for further assistance.

