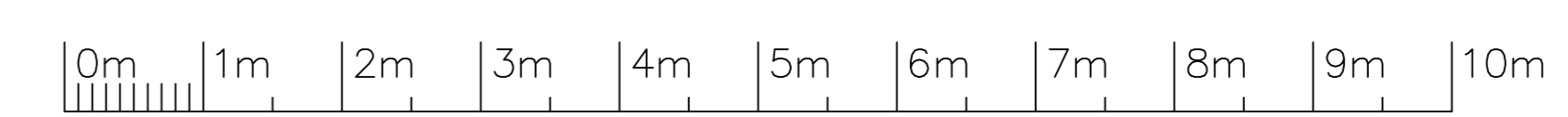
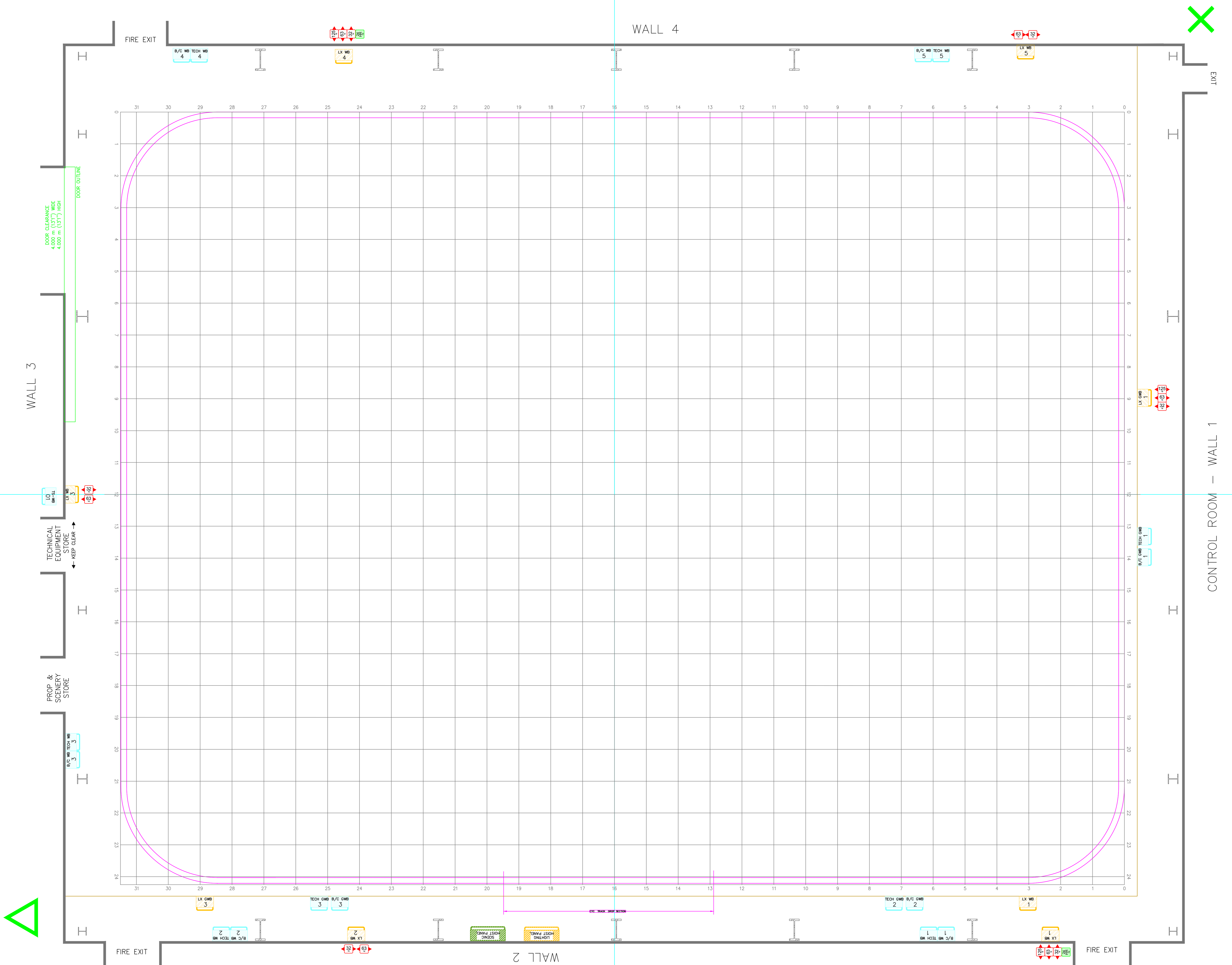


54 53 52 51 50 49 48 47 46 45 44 43 42 41 40 39 38 37 36 35 34 33 32 31 30 29 28 27 26 25 24 23 22 21 20 19 18 17 16 15 14 13 12 11 10 9 8 7 6 5 4 3 2 1 0



BBC Studioworks Kelvin Hall 1445 Argyle St. Glasgow G3 8AW
+44 (0) 20 3327 7400 hello@bbcstudioworks.com

Key to Symbols:	Notes:
HL House Lights	-MAX HEIGHT OF SCENERY HOOKS IS TBC
FE Fire Extinguisher	-MAX HEIGHT OF LIGHTING BARS IS 9M
FL Fire Lane	-FLOOR TO UNDERSIDE OF GRID TBCM (TBC)
SP Service Point	-STUDIO FLOOR GRID MARKINGS = 1000mm SQ.
Castello Beams	
Main Roof Trusses	
Scenic Hoists - RED Hook 180 Kg SWL	
Scenic Setting Floor Grid Markings (1000mm Sq)	
Studio Floor Centre Markings (Walls 1-3 1m@#2 Walls 2-4 1m@#1)	
Studio Gantry Outline	
Audience Seating Outline	
Audience Seating	
Audience Seating Numbers TBC Seated + TBC Wheelchairs	
Lighting Hoist Outline SWL 150kg	
Wallbox Production LX Power fed from 125A 3ph Supply	Lighting Hoist Control Panel
Wall Box Production LX Power 400A Tq-NE Powerlock	Lighting Wall Box
GS 24/7 Hour Power 2x13A 1x 16A Sp-NE Outlet	Scenic Hoist Control Panel
	Technical Wall Box
	Wall Box Legends
	o Floor Lighting WB = LX WB ??
	o Gantry Lighting WB = LX GB ??
	o Floor Technical WB = TECH WB ??
	o Gantry Technical WB = TECH GB ??
	o Grid Technical WB = TECH GDB ??

PRODUCTION DESIGN NOTES:

PRODUCTION

COSTING NO.
DESIGNER

DIRECTOR

DRAWN BY

ZERO DATE

PRODUCTION DATE

BBC Studioworks strives, with its best endeavour, to ensure that the information contained within these plans is accurate. However, it must be understood that if there are any specific requirements, critical measurements, or any doubt, as to the exact conditions on site, it is strongly recommended that a site survey is conducted, prior to any works being undertaken.

Taking this simple precaution can and does save a lot of embarrassment.

Please contact BBC Studioworks on +44 (0)203 327 6900 or your projects Studio Resource Manager for further assistance.

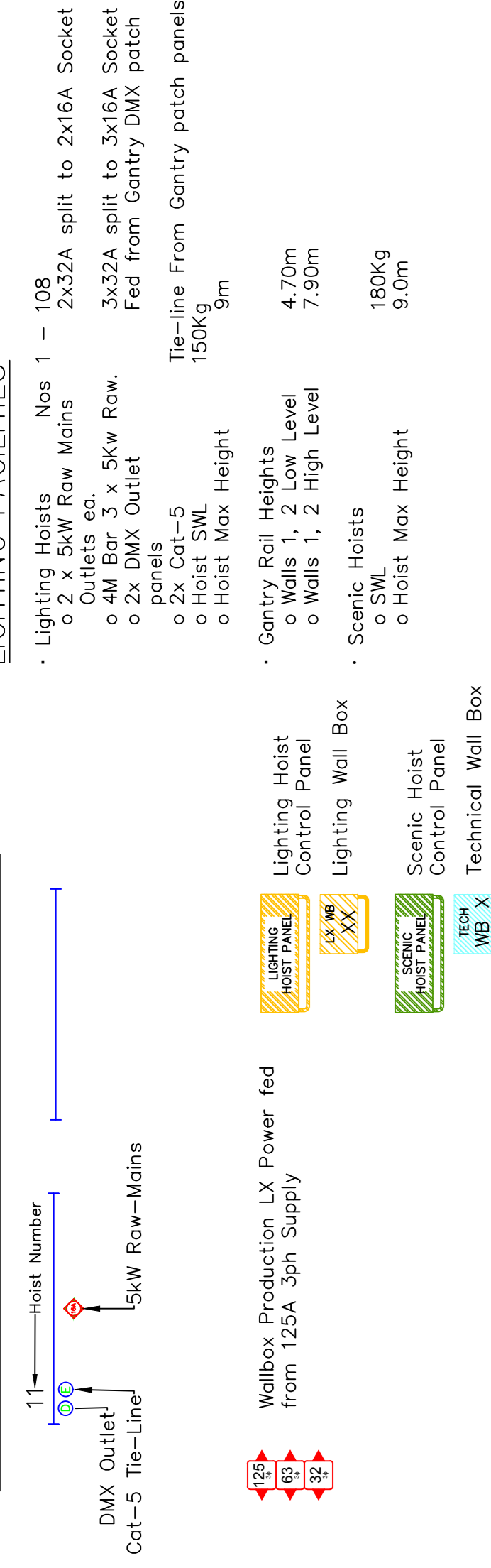
© BBC Studioworks Ltd 2022
Issued January 2022; All previous versions superceded; Errors & Omissions Excepted (E&OE)
Updates: Ver 100 31 Jan 2022 Andy James
Ver 101 19 Apr 2022 Andy James
Ver 105 07 Sep 2022 Andy James
Ver 201 25 Nov 2022 Andy James

PRODUCTION

STUDIO DATES

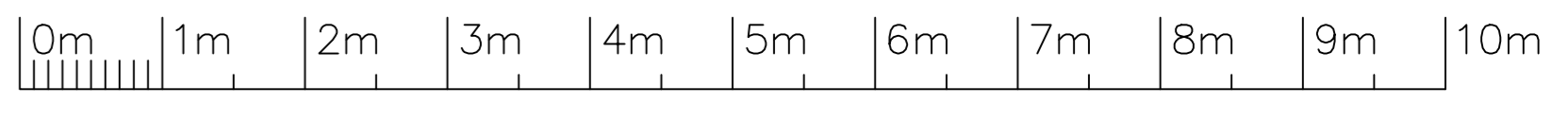
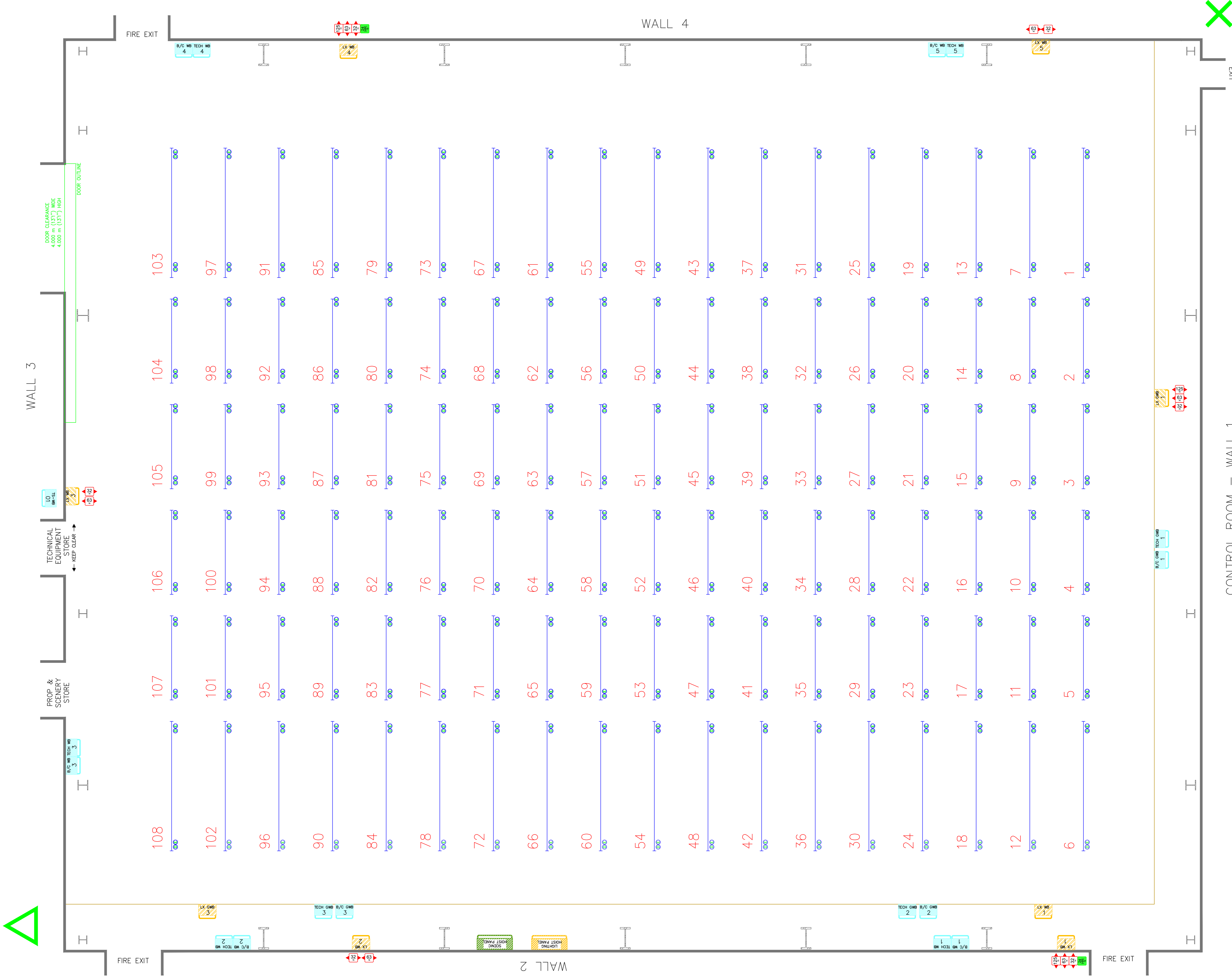
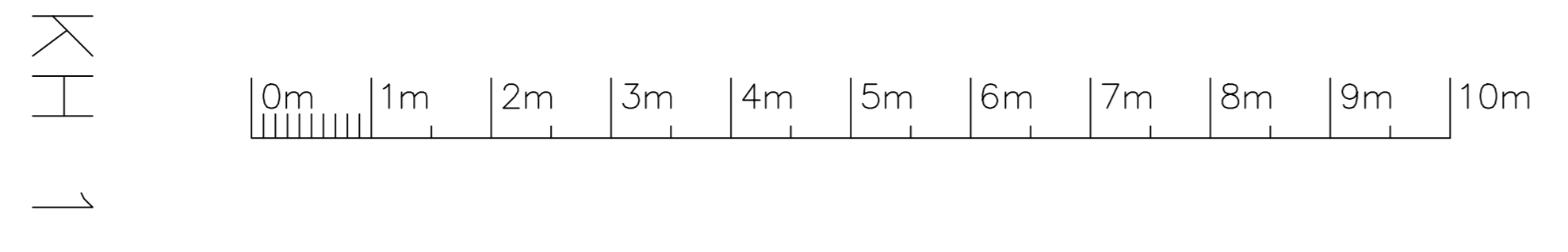
LIGHTING

LIGHTING HOIST OUTLETS & REFERENCES



- Wall Box Legends: LX MB ??, Floor Lighting MB, Floor Technical MB, Gantry Technical MB, GND Technical MB
- CS 24/7 Hoist Power: 2x1.5A, 1x 16A S-E-NE Outlet
- Wall Box: LX MB ??, Floor Lighting MB, Floor Technical MB, Gantry Technical MB, GND Technical MB

BBC Studioworks Ltd 2012. All rights reserved.
Errors & Omissions Excepted (E&OE)
Updates: Ver 100 31 January 2022 Andy James
Ver 101 02 February 2022 Andy James
Ver 102 22 August 2022 Andy James
Ver 105 07 Sep 2022 Andy James
Ver 201 23 Nov 2022 Andy James



CONTROL ROOM -- WALL 1