

Studio Plan Metric Scale 1:50@A0
 Elstree GL Stage 2

Elstree Studios, Shenley Road, Borehamwood, Herts, WD6 1JG Tel: +44 (0) 208 953 1600



KEY TO SYMBOLS:

- LIGHTING GRID ORDERS
- LIGHTING GRID TRACK & TRACK NUMBER
- LIGHTING GRID TRACK LINES
5W, 500kg Per grid track run section at any one time
- SOUND & VISION WALLBOX
- CAMERA CABLE CONNECTION

NOTES:

- Height to Lighting Grid 15m
- Studio Fire Lane
- Gantry Line

DESIGN NOTES:

PRODUCTION

COSTING NO. _____

DESIGNER _____

DIRECTOR _____

DRAWN BY _____

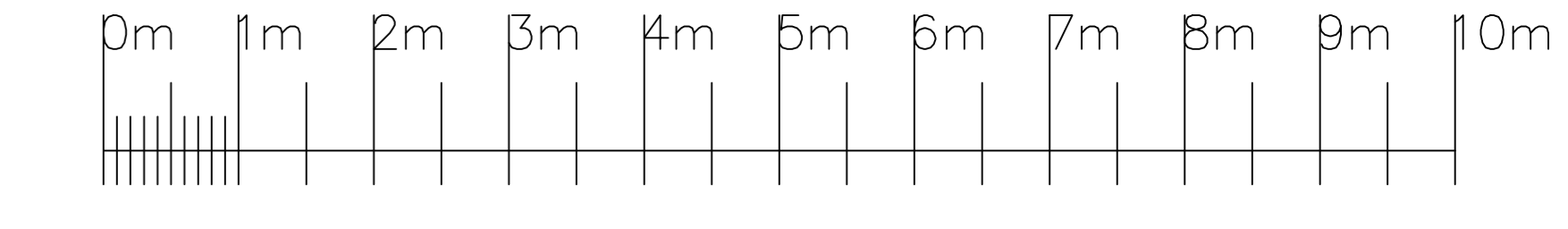
ZERO DATE _____

PRODUCTION DATE _____

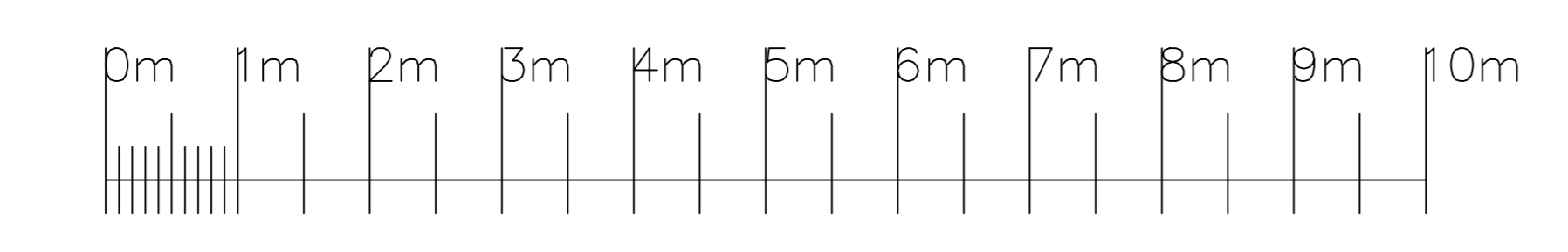


BBC Studioworks strives, with its best endeavour, to ensure that the information contained within these plans is accurate. However, it must be understood that if there are any specific requirements, critical measurements, or any doubt, as to the exact conditions on site, it is strongly recommended that a site survey is conducted, prior to any works being undertaken. Taking this simple precaution can and does save a lot of embarrassment. Please contact BBC Studioworks on +44 (0)203 327 6900 or your projects Studio Resource Manager for further assistance.

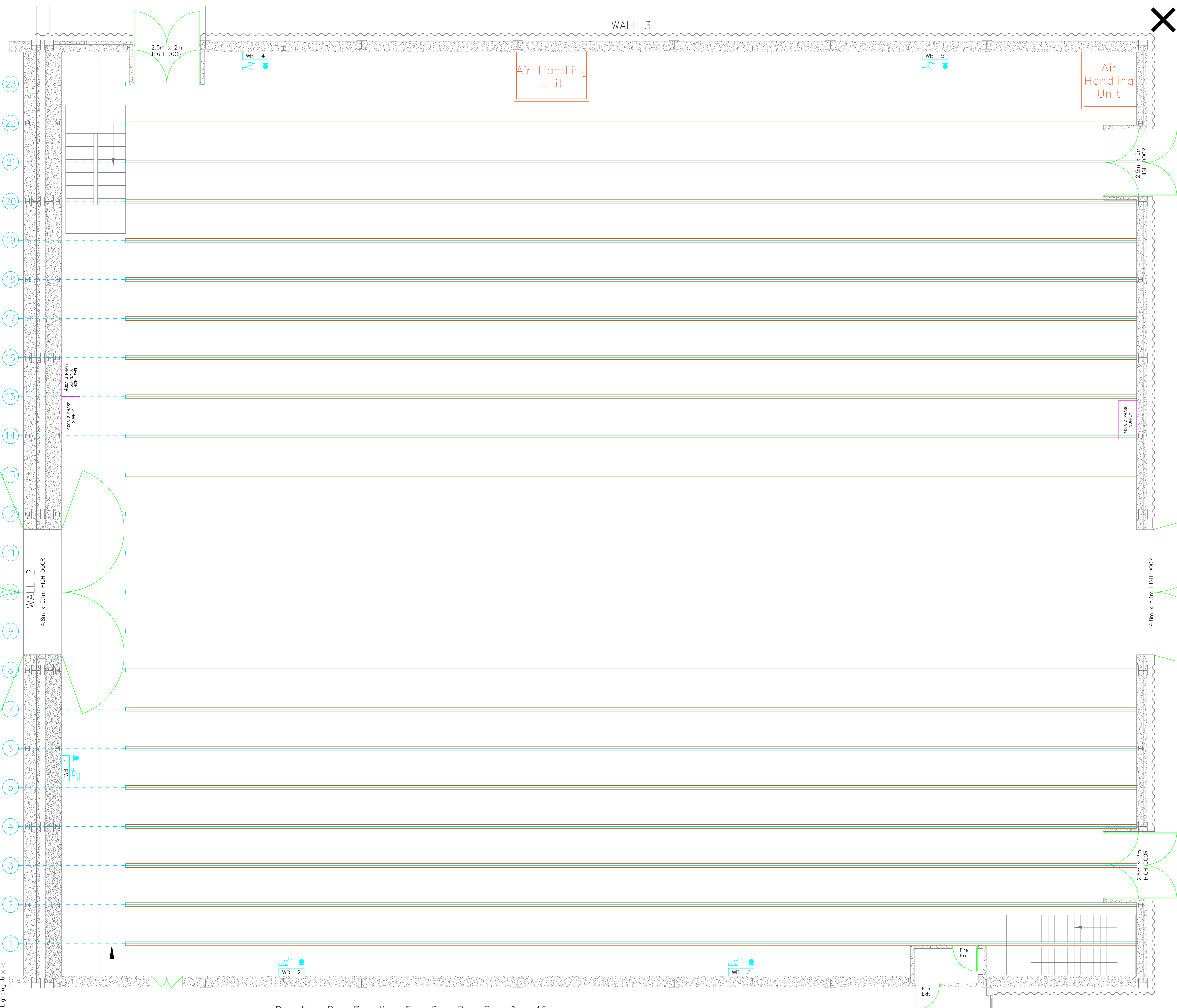
© BBC Studioworks Ltd 2016
 Issued December 2014; All previous versions superceded;
 Errors & Omissions Excepted (E&OE)
 Updates:
 #10 22/12/2014 MLF #11 06/05/2016 John Loughman



Lighting tracks
 Transfer Dolly
 @ Gantry level



WALL 1



Studio Plan Metric Scale 1:50@A0
 Elstree GL Stage 2

Elstree Studios, Shenley Road, Borehamwood, Herts, WD6 1JG Tel: +44 (0) 208 953 1600

KEY TO SYMBOLS:		NOTES:	
	LIGHTING GRID ORDERS		Height to Lighting Grid 15m
	LIGHTING GRID TRACK & TRACK NUMBER		Studio Fire Lane
	LIGHTING GRID TRACK LINES		Gantry Line
	SOUND & VISION WALLBOX		
	CAMERA CABLE CONNECTION		

DESIGN NOTES:

PRODUCTION

COSTING NO. _____

DESIGNER _____

DIRECTOR _____

DRAWN BY _____

ZERO DATE _____

PRODUCTION DATE _____



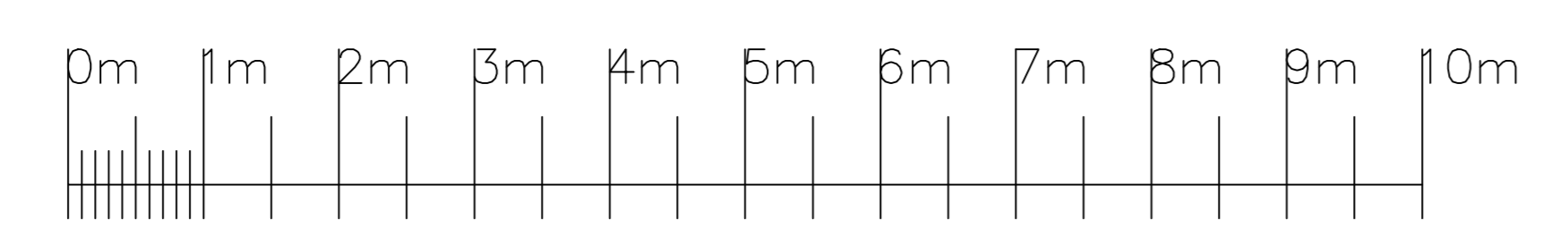
BBC Studioworks strives, with its best endeavour, to ensure that the information contained within these plans is accurate. However, it must be understood that if there are any specific requirements, critical measurements, or any doubt, as to the exact conditions on site, it is strongly recommended that a site survey is conducted, prior to any works being undertaken.

Taking this simple precaution can and does save a lot of embarrassment.

Please contact BBC Studioworks on +44 (0)203 327 6900 or your projects Studio Resource Manager for further assistance.

© BBC Studioworks Ltd 2016
 Issued December 2014; All previous versions superceded;
 Errors & Omissions Excepted (E&OE)
 Updates:
 #10 22/12/2014 MLF #11 06/05/2016 John Loughman

Transfer Dolly
 @ Gantry level



WALL 1

