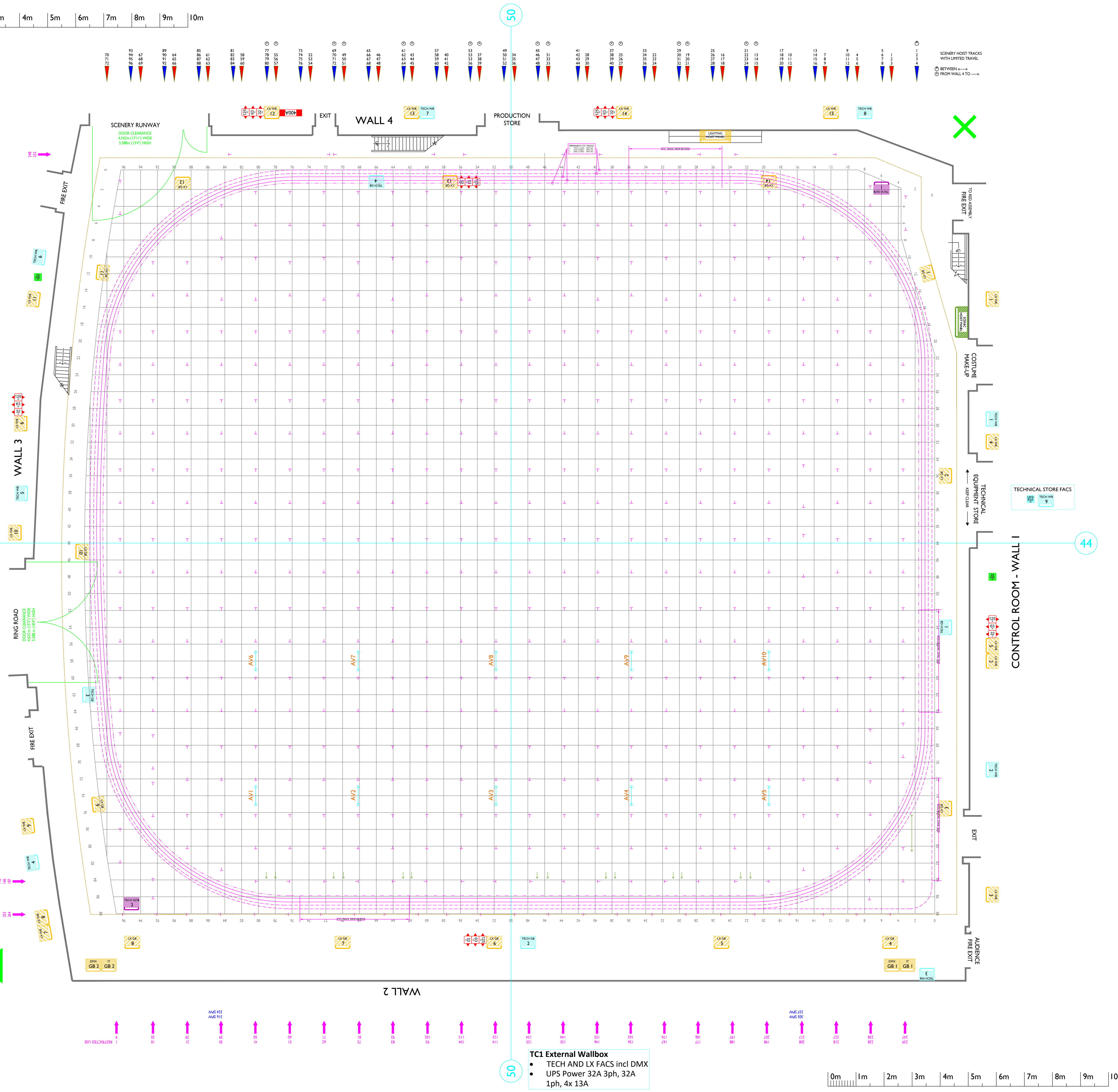




Studio TCI

BBC Studioworks Television Centre Wood Lane White City London W12 7FW
+44 (0) 20 3327 7400 hello@bbcstudioworks.com



Key to Symbols:	Notes:	
HL	Hoist Lights	-MAX HEIGHT OF SCENERY HOOKS IS 12.00M
FE	Fire Extinguisher	-MAX HEIGHT OF LIGHTING BARS IS 12.50M
FL	Fire Lane	-FLOOR TO UNDERSIDE OF GRID 13.4M (44')
SP	Service Point	-STUDIO FLOOR GRID MARKINGS - 600mm SQ
	Castella Beams	
	Main Roof Trusses	
	Scenic Hoists - BLUE Hook 114kg SWL	
	Scenic Hoists - RED Hook 180kg SWL	
	Scenic Setting Floor Grid Markings 600mm Sq	
	Studio Floor Centre Markings (over 1.0 Level) Wall 2.1 Level 2.0	
	Studio Gantry Outline	
	Audience Seating Outline	
	Audience Seating Numbers 300 Seated + 400 Standing	
	Lighting Hoist Outline SWL 100kg	
	Lighting Hoist Line SWL 100 kg	
	Wallbox Production LX Power fed from 125A 3ph Supply	Lighting Hoist Control Panel
	Wall Box Production LX Power 400A Tq-NE Powerlock	Lighting Wall Box
	UPS 63A Sp-NE TECHNICAL Outlet	Scenic Hoist Control Panel
	GS 247 Hour Power 2x13A 1x 16A Sp-NE Outlet	Technical Wall Box
Wall Box Legends		
	Floor Lighting WB	= LX WB ??
	Gantry Lighting WB	= LX GB ??
	Floor Technical WB	= TECH WB ??
	Gantry Technical WB	= TECH GB ??
	Grid Technical WB	= TECH GDB ??

PRODUCTION DESIGN NOTES:

PRODUCTION

COSTING NO.

DESIGNER

DIRECTOR

DRAWN BY

ZERO DATE

PRODUCTION DATE

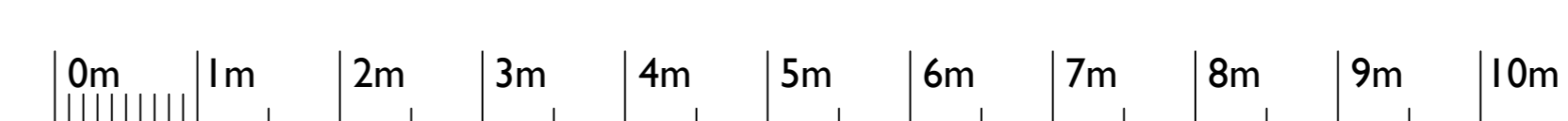


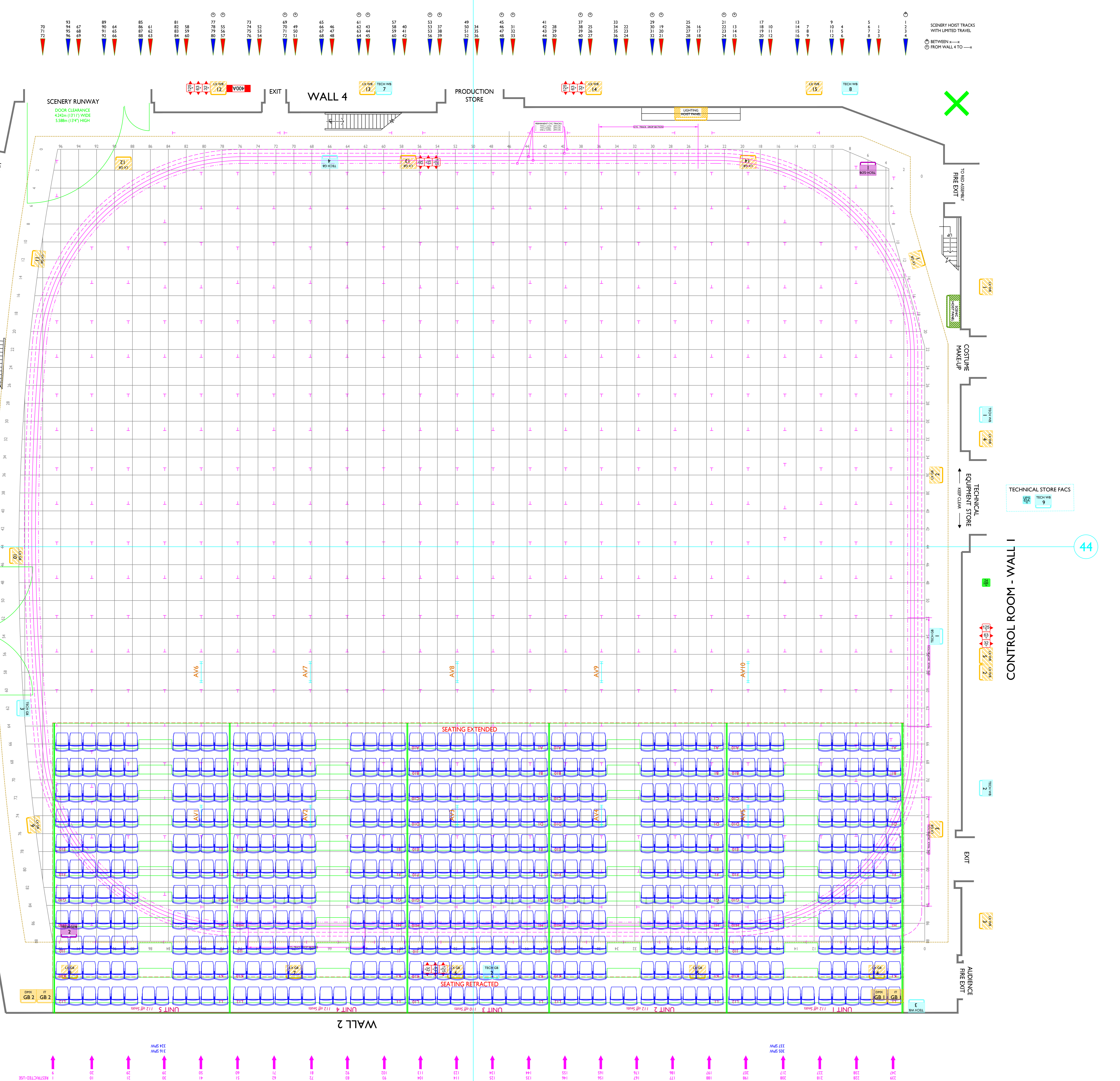
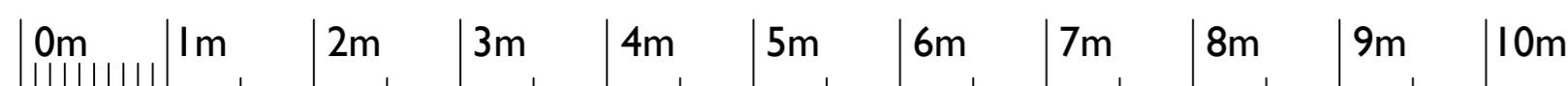
BBC Studioworks strives, with its best endeavour, to ensure that the information contained within these plans is accurate. However, it must be understood that if there are any specific requirements, critical measurements, or any doubt, as to the exact conditions on site. It is strongly recommended that a site survey is conducted, prior to any works being undertaken. Taking this simple precaution can and does save a lot of embarrassment.

Please contact BBC Studioworks on +44 (0)203 327 6900 or your projects Studio Resource Manager for further assistance.

© BBC Studioworks Ltd 2017
Issued April 2020. All previous versions superceded; Errors & Omissions Excepted (E/OE)
Updates: Ver 100 31 July 2017 PSB Vision
Ver 451 05 May 2020 PSB Vision

TC1 External Wallbox
• TECH AND LX FACS incl DMX
• UPS Power 32A 3ph, 32A 1ph, 4x 13A





Studio TCI

BBC Studioworks Television Centre Wood Lane White City London W12 7FW
+44 (0) 20 3327 7400 hello@bbcstudioworks.com

Key to Symbols:	Notes:	
HL	Hoist Lights	-MAX HEIGHT OF SCENERY HOOKS IS 12.00M
FE	Fire Extinguisher	-MAX HEIGHT OF LIGHTING BARS IS 12.50M
FL	Fire Lane	-FLOOR TO UNDERSIDE OF GRID 13.4M (44')
SP	Service Point	-STUDIO FLOOR GRID MARKINGS - 600mm SQ
	Castella Beams	
	Main Roof Trusses	
	Scenic Hoists - BLUE Hook	114kg SWL
	Scenic Hoists - RED Hook	180kg SWL
	Scenic Setting Floor Grid Markings	600mm Sq
	Studio Floor Centre Markings	1.0m (3.28ft) Grid
	Studio Gantry Outline	
	Audience Seating Outline	
	Audience Seating Numbers	300 Seated + 400 Standing
	Lighting Hoist Outline	SWL 100kg
	Lighting Hoist Line	SWL 100 kg
	Wallbox Production LX Power fed	from 125A 3ph Supply
	Wall Box Production LX Power	400A Tq-NE Powerlock
	UPS 63A Sp-NE	TECHNICAL Outlet
	GS 247 Hour Power	2x13A 1x16A Sp-NE Outlet
	Lighting Control Panel	
	Lighting Wall Box	
	Scenic Hoist Control Panel	
	Technical Wall Box	
Wall Box Legends		
	Floor Lighting WB	= LX WB ??
	Gantry Lighting WB	= LX GB ??
	Floor Technical WB	= TECH WB ??
	Gantry Technical WB	= TECH GB ??
	Grid Technical WB	= TECH GDB ??

PRODUCTION DESIGN NOTES:

PRODUCTION

COSTING NO.
DESIGNER

DIRECTOR

DRAWN BY

ZERO DATE

PRODUCTION DATE

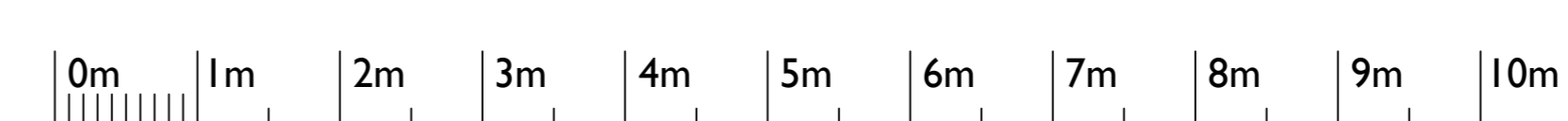


BBC Studioworks strives, with its best endeavour, to ensure that the information contained within these plans is accurate. However, it must be understood that if there are any specific requirements, critical measurements, or any doubt, as to the exact conditions on site. It is strongly recommended that a site survey is conducted, prior to any works being undertaken.

Taking this simple precaution can and does save a lot of embarrassment.
Please contact BBC Studioworks on +44 (0)203 327 6900 or your projects Studio Resource Manager for further assistance.

© BBC Studioworks Ltd 2017
Issued April 2020. All previous versions superceded; Errors & Omissions Excepted (E/OE)
Updates: Ver 100 31 July 2017 PSB Vision
Ver 451 05 May 2020 PSB Vision

TC1 External Wallbox
• TECH AND LX FACS incl DMX
• UPS Power 32A 3ph, 32A 1ph, 4x 13A



PRODUCTION

STUDIO DATES

LIGHTING

LIGHTING HOIST OUTLETS & REFERENCES

