



ROATH LOCK STUDIOS

ROATH LOCK STUDIOS

Roath Lock is a purpose built studio production facility, comprised of 9 studios. Only 11 years old, this modern and spacious facility has been home for Dr Who, Casualty and Pobol y Cwm.

With a rich history in television and film, Wales is a fantastic place to work and film in, as it has an abundance of diverse and beautiful landscapes, efficient infrastructure and a highly skilled crew base.





Stage 4, Roath Lock

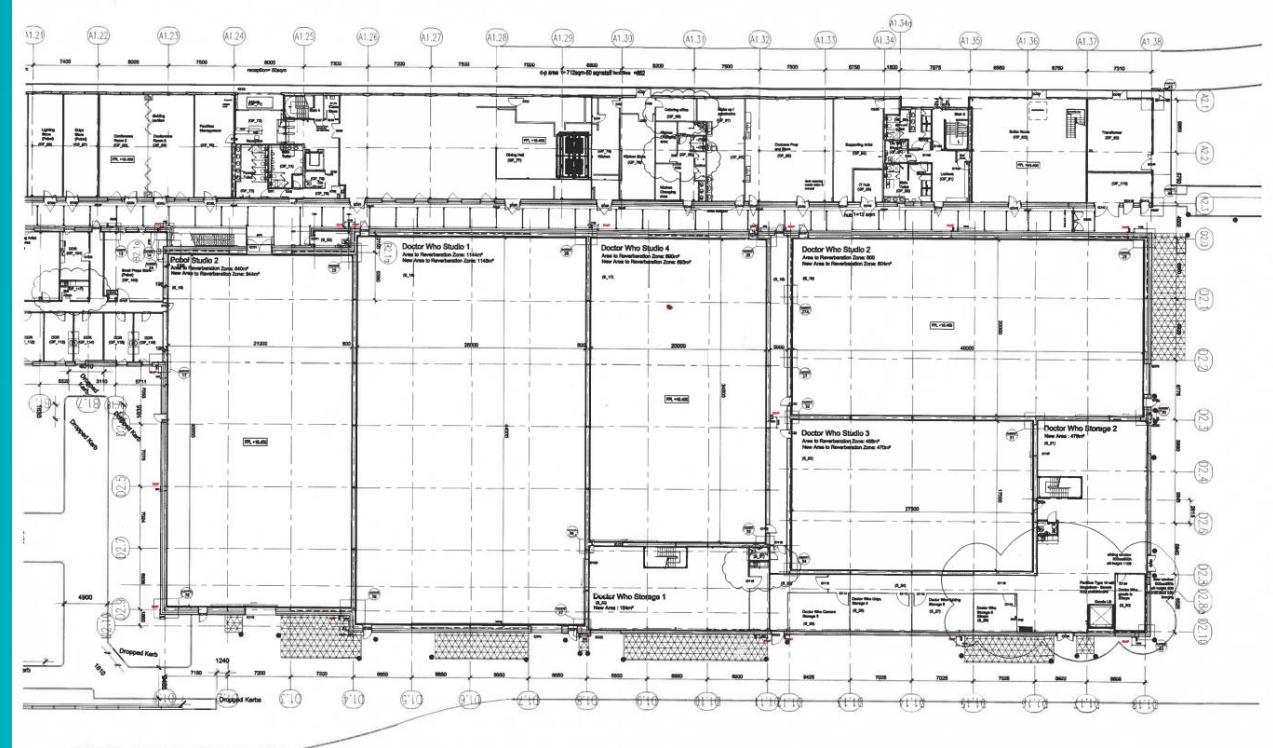


THE STAGES

THE STAGES

Doctor Who has now moved out of Roath Lock, which means we now have stages and ancillary spaces immediately available to hire.

We have 4 spacious stages, totalling 33,658 sq. ft (3,129m²). All of which are sound-proofed and air-conditioned, with accompanying ancillary areas to suit a wide range of requirements.



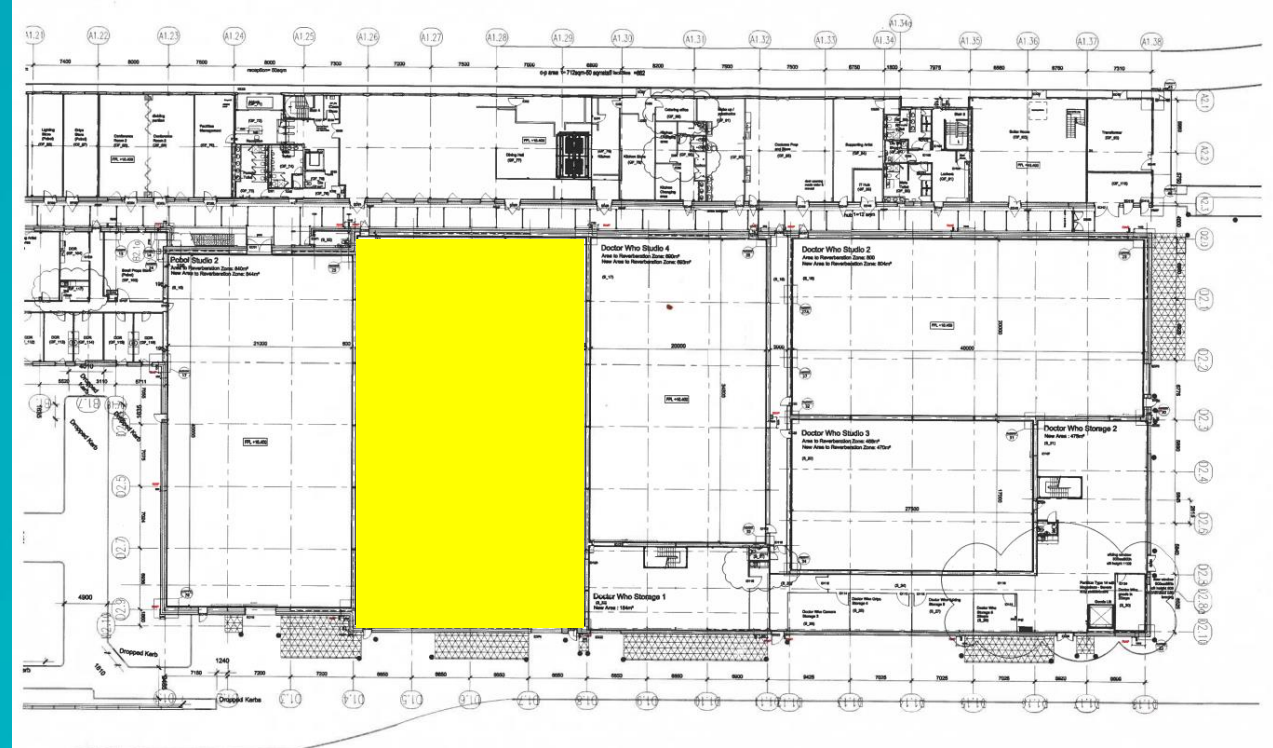
STAGE 4

At 12,318 sq. ft. (1,145m²), Stage 4 is the largest available.

Length: 144.4 ft (44m)
Width: 85.3 ft (26m)
Height: 38.7 ft. (11.8m)

You can enter Stage 4 from the central corridor above, the car park and the storage area between 3 and 4.

Dock doors allow loading from the car park.



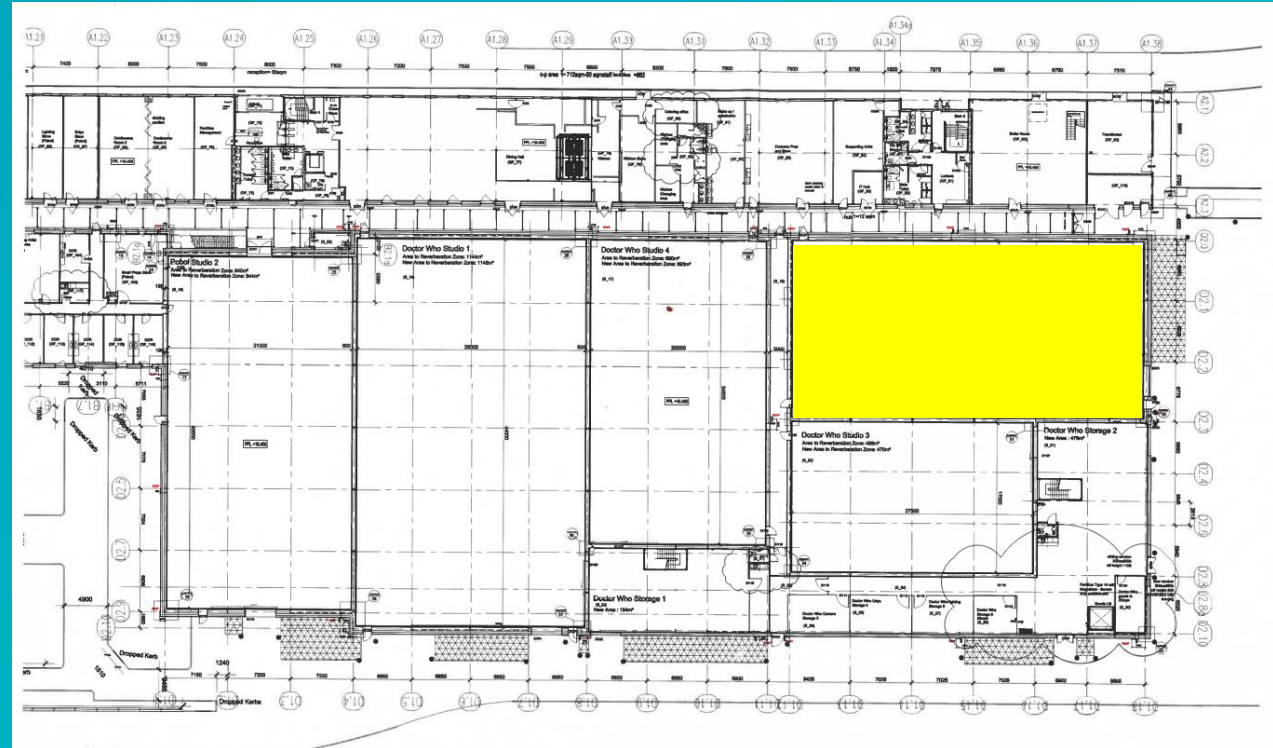
STAGE 1

At 8,699 sq. ft. (809m²), Stage 1 is the second largest available.

Length: 131.6 ft (40.1m)
Width: 66.1 ft (20.2m)
Height: 24.2 ft. (7.4m)

You can enter Stage 1 from the central corridor above, Russell's Alley (thin corridor between 1 & 3), the car park and the storage area between 1 & 2.

Dock doors allow loading from the car park.



STAGE 3

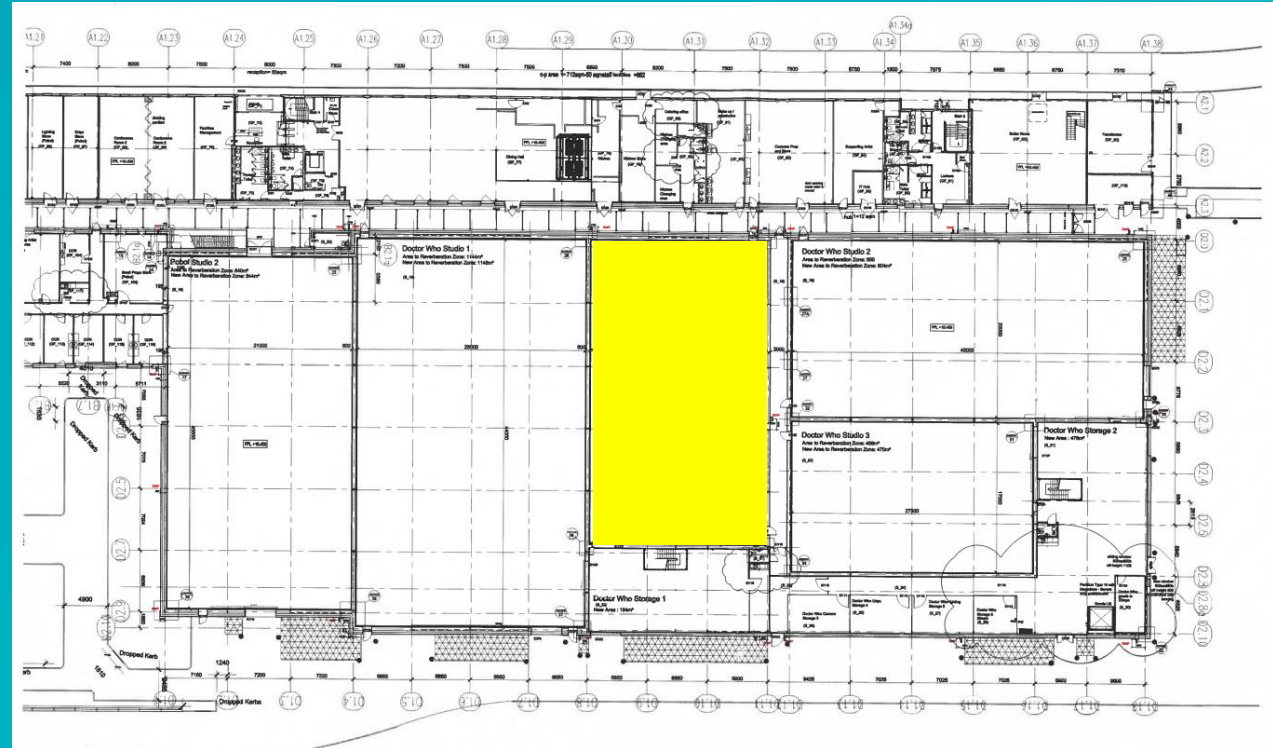
At 7,539 sq. ft. (701m²), Stage 3 is the second smallest.

Length: 113.8 ft (34.7m)
Width: 66.2 ft (20.2m)
Height: 24.2 ft. (7.4m)

Productions can either use this space for smaller sets, or turn the space into a workshop area to support the other stages.

You can enter Stage 3 from the central corridor, Russell's Alley and the storage area between 3 & 4.

Dock doors allow loading from the storage area.



STAGE 2

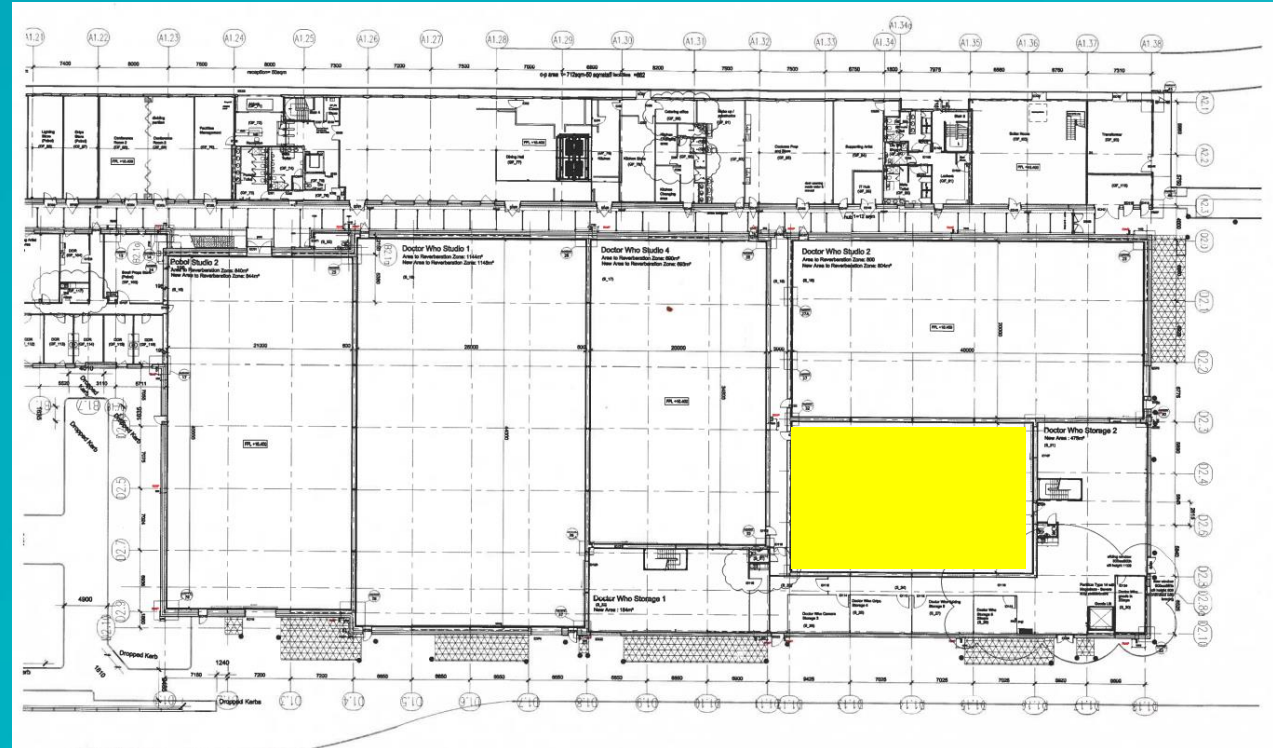
At 5,101 sq. ft. (474m²), Stage 2 is the smallest.

Length: 90.6 ft (27.6m)
Width: 56.3 ft (17.2m)
Height: 24.2 ft. (7.4m)

Productions can either use this space for smaller sets, or turn the space into a workshop area to support the other stages.

You can enter Stage 2 from the central corridor, Russell's Alley and the storage area between 1 & 2.

Dock doors allow loading from the storage area.





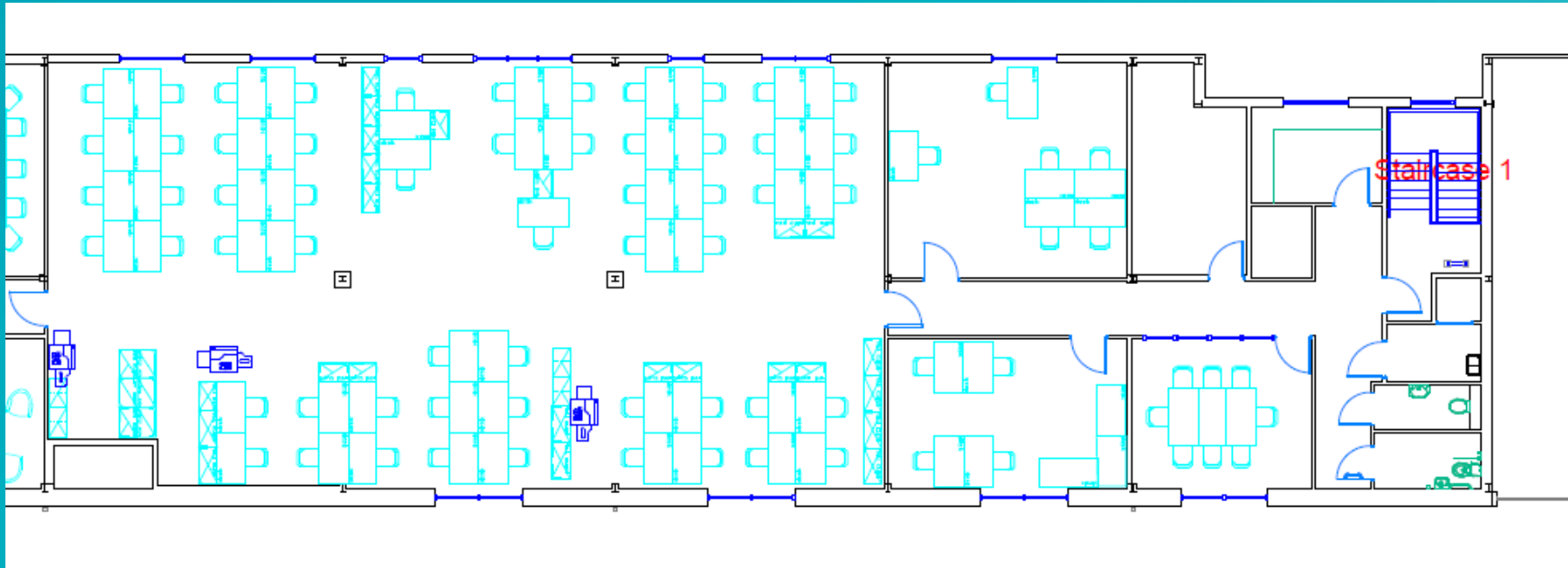
PRODUCTION OFFICES

PRODUCTION OFFICES

We have 4,535 sq. ft. (421m²) of production office space available, which is currently configured as:

- Large open plan office with 60 work stations
- Meeting room
- 2x multipurpose smaller offices
- Kitchen

All rooms are carpeted with heating, air-conditioning and WiFi.



OPEN PLAN OFFICE



2,914.65 sq. ft. (270.78m²)



MULTIPURPOSE OFFICE #1



433.57 sq. ft. (40.28m²)



MULTIPURPOSE OFFICE #2



307.20 sq. ft. (28.55m²)



MEETING ROOM



235.62 sq. ft. (21.89m²)

KITCHEN

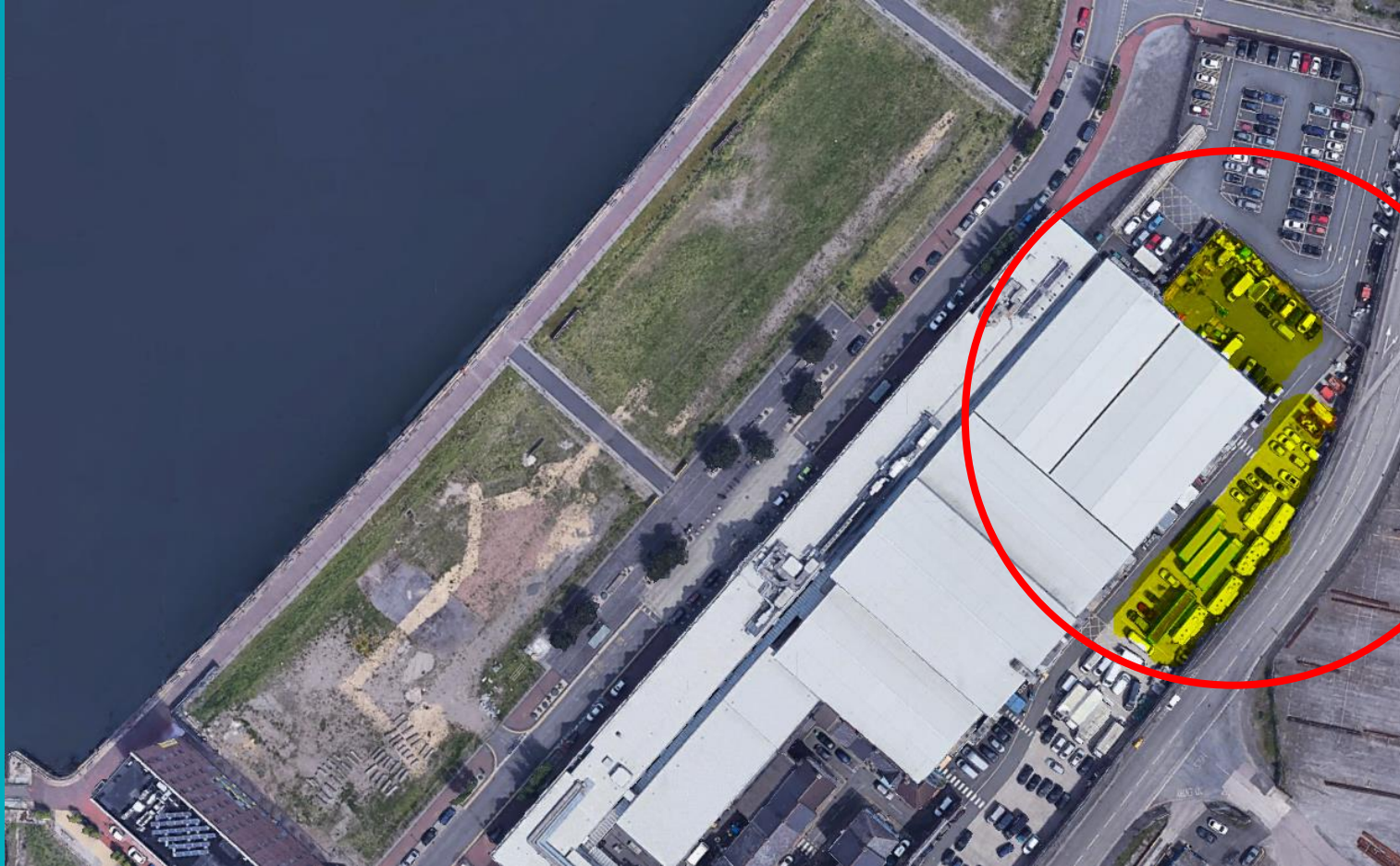


109.36 sq. ft. (10.16m²)



ON SITE PARKING

ON SITE PARKING



Parking and trailer space available outside studios

ON SITE PARKING



The space is currently configured to have 40 cars and 6 large trailers approximately.

Final space allocation to be confirmed.

ON SITE PARKING



Additional parking space may become available here on application.



PRODUCTION SUPPORT AREAS

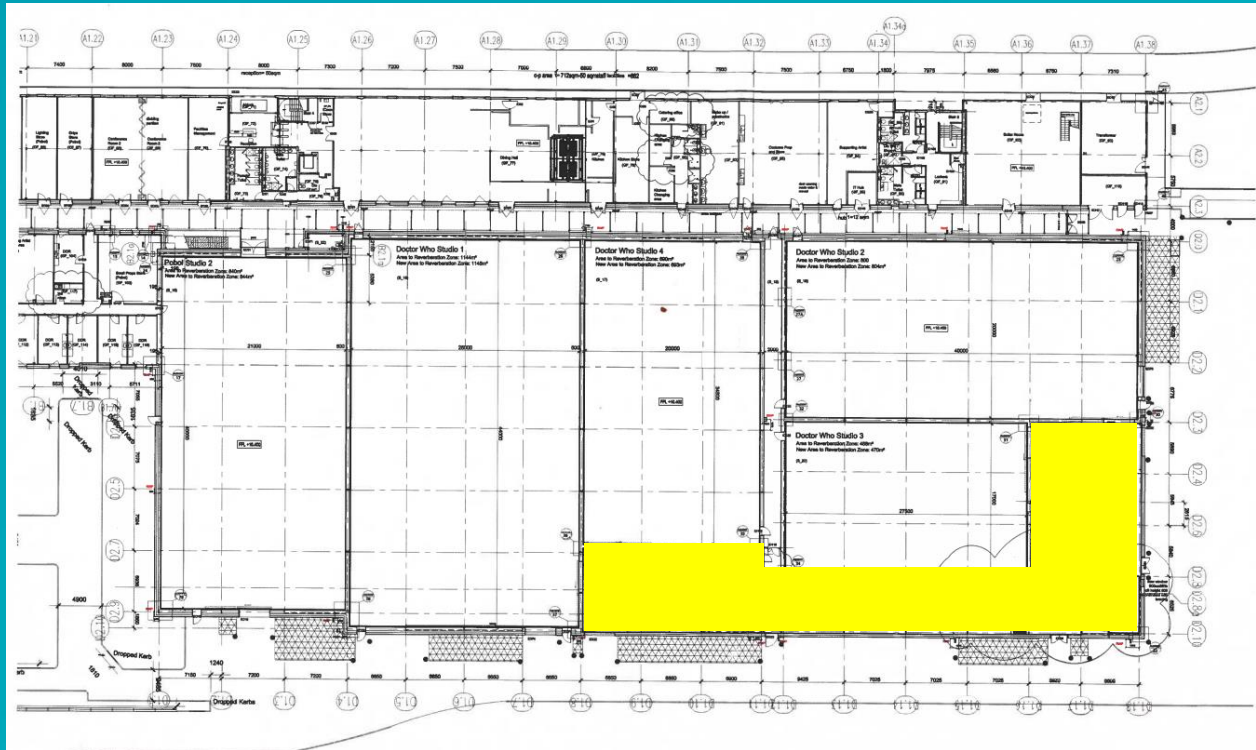
PRODUCTION SUPPORT AREAS

In addition to the sound stages, as this facility was purpose built for television production, we can also offer a number of extra rooms to help support your team. All of the rooms have access to the central corridor, as do the studios, for easy access.

- Set and Prop Storage
- Hair and Makeup Room
- Wardrobe Room
- Supporting Artist's Room
- Additional Office Space
- Canteen Space
- Toilet Facilities
- On-site Security



SET AND PROP STORAGE



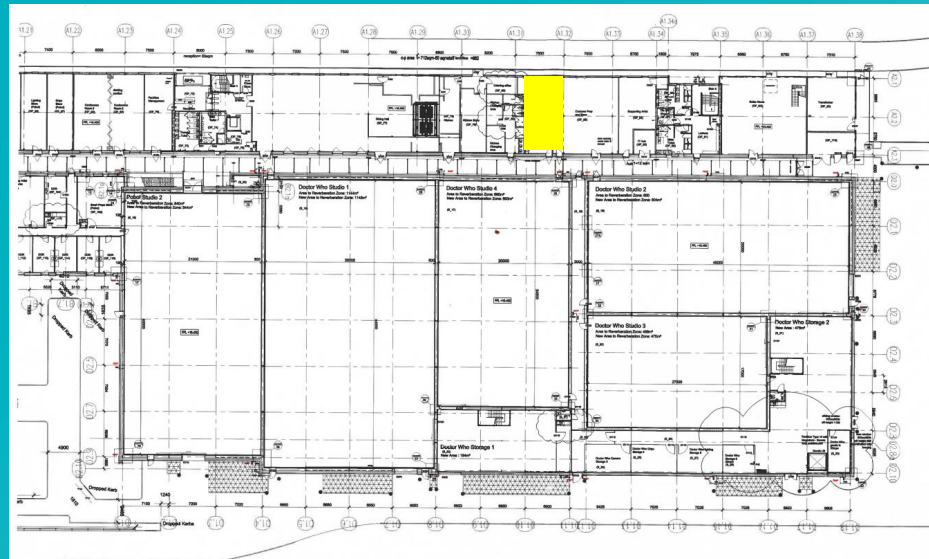
1173 sq. ft (109m²) of prop and set storage, with a mezzanine level between stages 1 & 2 and stages 3 & 4.



HAIR AND MAKEUP



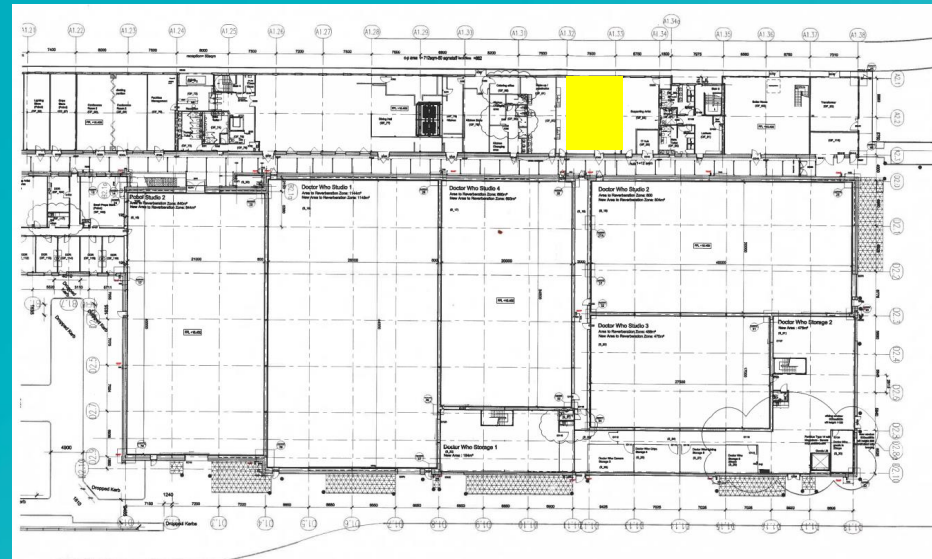
590 sq. ft. (54.84m²) hair and makeup room, next to the studio doors. It is currently set up with 4 chairs, 2 reclining chairs, storage area and sink area



WARDROBE



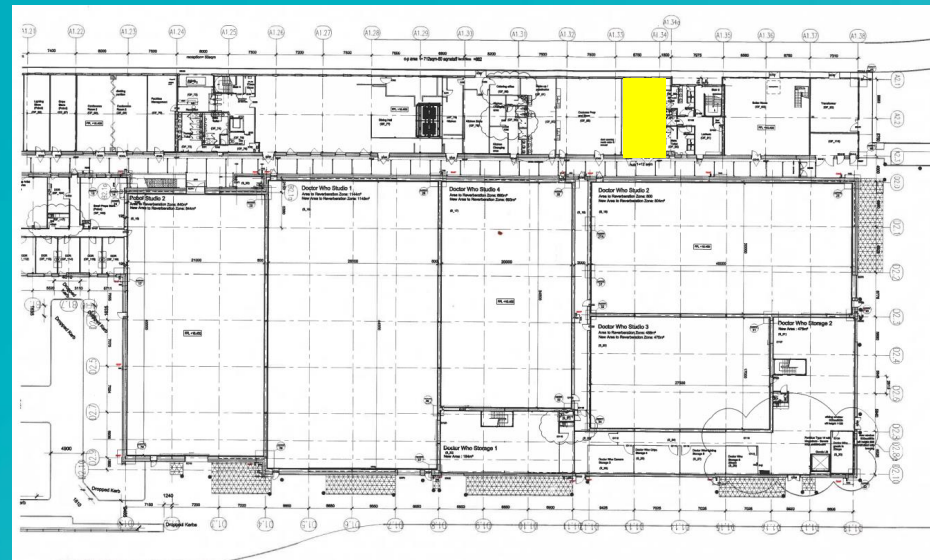
1,270 sq. ft (118m²) wardrobe room, currently configured with racking and storage shelves.



SUPPORTING ARTIST'S ROOM



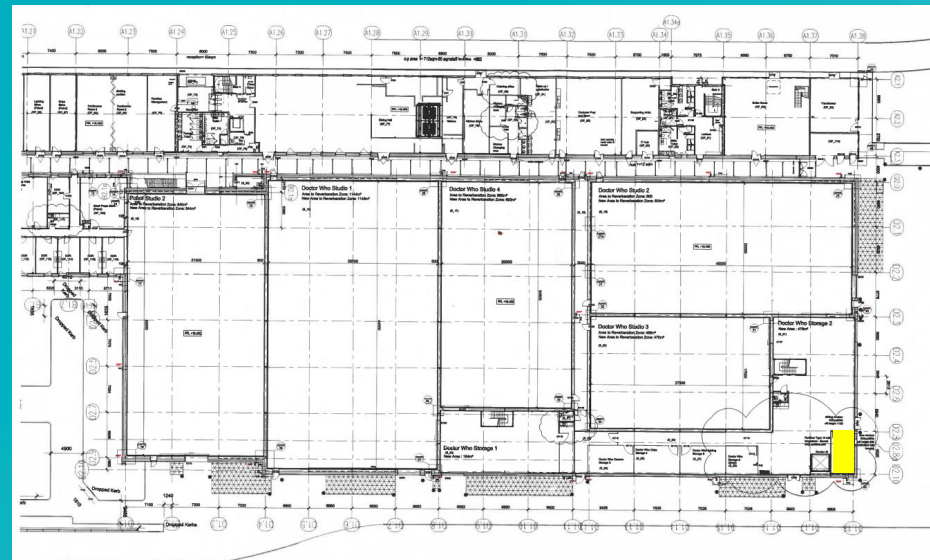
617.74 sq. ft. (57.39m²) office, currently used for Supporting Artists. Currently setup with lockers, a desk area and a small room that can be used as a dressing room or additional storage.



ADDITIONAL OFFICE SPACE



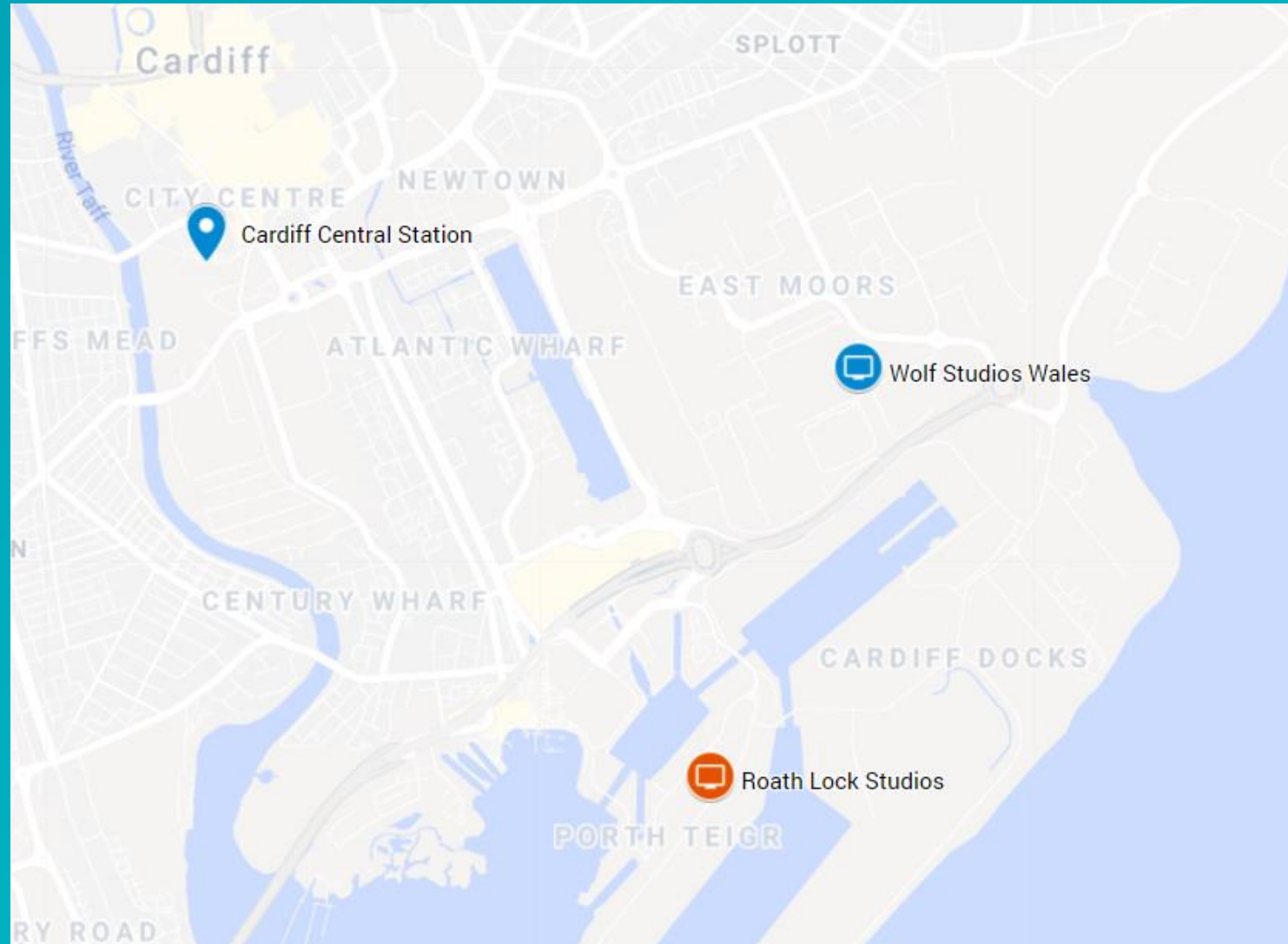
261.67 sq. ft (24.31m²)
office, tucked away in the
storage area between
Stage 1 & 2



LOCATION

Located near Cardiff's city centre, Roath Lock is extremely easy to get to by car, plane or public transport.

With hourly trains running from London, and the M4 running directly to Cardiff, the journey can be made in two hours.



ENVIRONMENT

Roath Lock reaches very high standards for reducing its environmental impacts and for maximising its sustainability. Considerations have been taken into account covering the ecology of the site, sustainable sourcing of construction materials, energy efficient, water usage, car parking, cyclist facilities and renewable energy.

The building has been awarded an interim 'Outstanding' rating by the Building Research Establishment Environmental Assessment Method (BREEAM) which measures how environmentally friendly the construction is and how the building operates. It covers things like the ecology of the site, sustainable sourcing of construction materials, energy efficiency, water usage, car parking, cyclists facilities and renewable energy. The building has therefore received an A for its energy performance asset rating.





CONTACTS

Jon Noakes
Commercial Director
07779 020 440
Jon.Noakes@bbcstudioworks.com

Daniel Osborn
Account Manager
07976 265 011
Daniel.Osborn@bbcstudioworks.com

